

COLOR WHEEL REFERENCE

EXAMPLE

Remember ROY G. BIV:

- * RED
- * ORANGE
- * YELLOW
- GREEN
- BLUE
- INDIGO
- VIOLET

- COOL COLORS
- * WARM COLORS

PRIMARY COLORS: RED, YELLOW, BLUE

They cannot be mixed to be created, the mixing of these colors creates the other colors.

SECONDARY COLORS: ORANGE, GREEN, PURPLE

Those colors created by combining the primaries.

Black and White are Not Colors. White is the presence of all colors (it reflects all color wavelengths) and black is the absence of all color (it absorbs all color wavelengths).

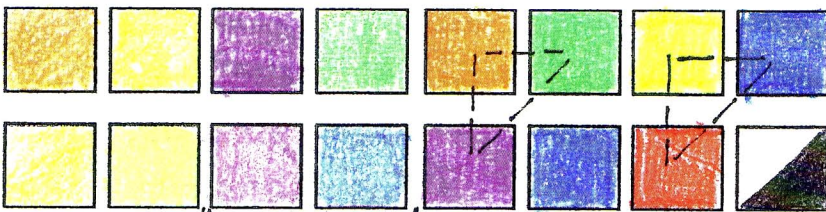
OPPOSITE COLORS (complimentary) are those colors opposite each other on the color wheel. They create a maximum of visual contrast and vibration.

TINTS: add white to a color

SHADES: add black to a color (or its compliment)

VALUE: the relative darkness or lightness of an object. Also, the movement of light on an object.

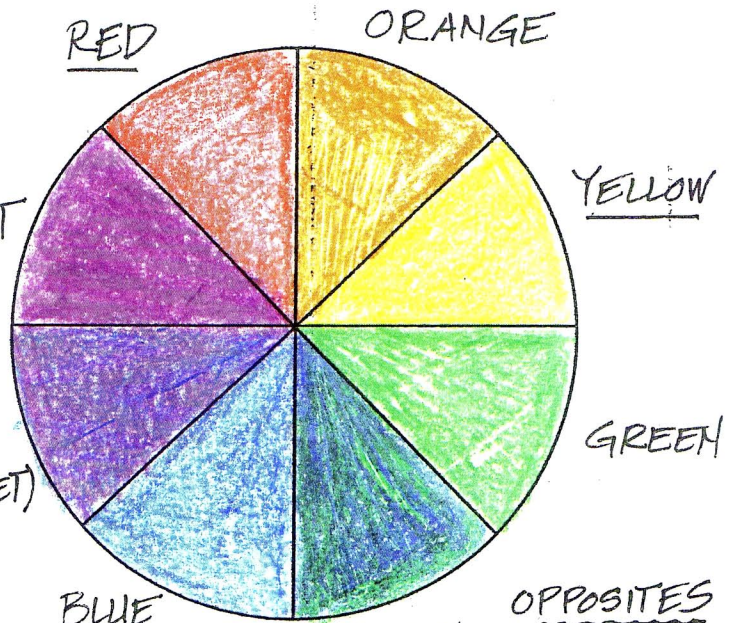
Spaces provided to experiment in creating different color effects.



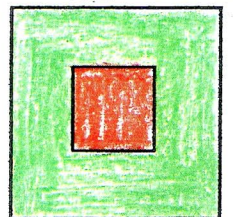
ANALOGOUS COLOR GROUPS

SECONDARY TRIADS

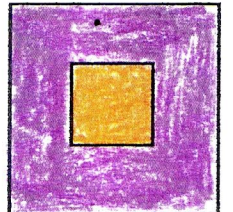
(next to or near each other on the color wheel)



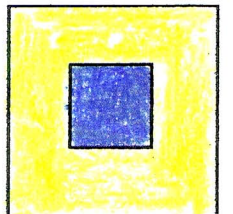
OPPOSITES



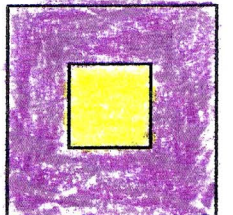
RED - GREEN



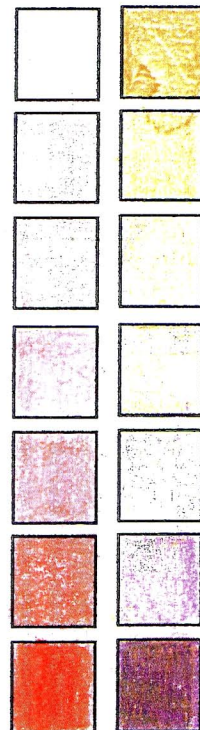
ORANGE - VIOLET



BLUE - YELLOW



YELLOW - VIOLET



RED TINTS

RED + WHITE

ORANGE SHADES

ORANGE + VIOLET